

30 July 2020

FOR IMMEDIATE RELEASE

**Mammoet-Giant JV supports manufacturing of
Taiwan's first wind turbine jacket foundations**

Wide range of lifting and transport technology enables time and cost efficiencies

A joint venture between Mammoet and Giant Heavy Machinery Services has started working with Sing Da Marine Structure Corporation, a marine engineering subsidiary of China Steel Corporation to provide assembly, transportation and load-out services for Taiwan's first locally fabricated wind turbine jacket foundations, on site at its manufacturing facility.

Sing Da Marine Structure Corporation commented, "We are excited to leverage Mammoet-Giant JV's engineering expertise to assist us with the design of lifting arrangements that will ensure efficient and safe operations. Mammoet-Giant JV's wide range of lifting and transport technology is enabling time and cost efficiencies for this project."

Mammoet-Giant JV will be performing the assembly, transportation and load-out of the jackets, which each weigh approximately 1,200t. The [PTC200-DS Ring Crane](#) will assemble the jackets by first upending the lower jacket structure before installing both the upper structure and transition pieces at a single location.

72 axle lines of [SPMT](#) will then transport each jacket up to 1,200m from the jacket fabrication line to a storage area. Four jackets are expected to be simultaneously assembled near the PTC200-DS Ring Crane while the crane will also complete multiple heavy lifts to load-out each jacket onto the barge, thus increasing time efficiency for this project. The project is a joint effort between SDMS and renewable energy company Ørsted, with the aim to deliver jacket foundations and knowledge transference to develop Taiwan's offshore wind supply capacity.

Mammoet

Mammoet helps clients with Smarter, Safer and Stronger solutions to any heavy lifting or transport challenge. We aim to develop long term relationships in order to understand their businesses and challenges best, so we can realize the most efficient and cost-effective approaches. We have a unique global network and an unparalleled fleet of equipment. Through deep and longstanding engineering expertise and the highest quality and safety standards in execution we bring an intelligent and flexible approach to projects across a wide breadth of industry sectors. Clients trust us to help them achieve feats that were once considered impossible, and we have often broken records in doing so.

For more information, visit www.mammoet.com.

Reference

Subject

Page 2/3

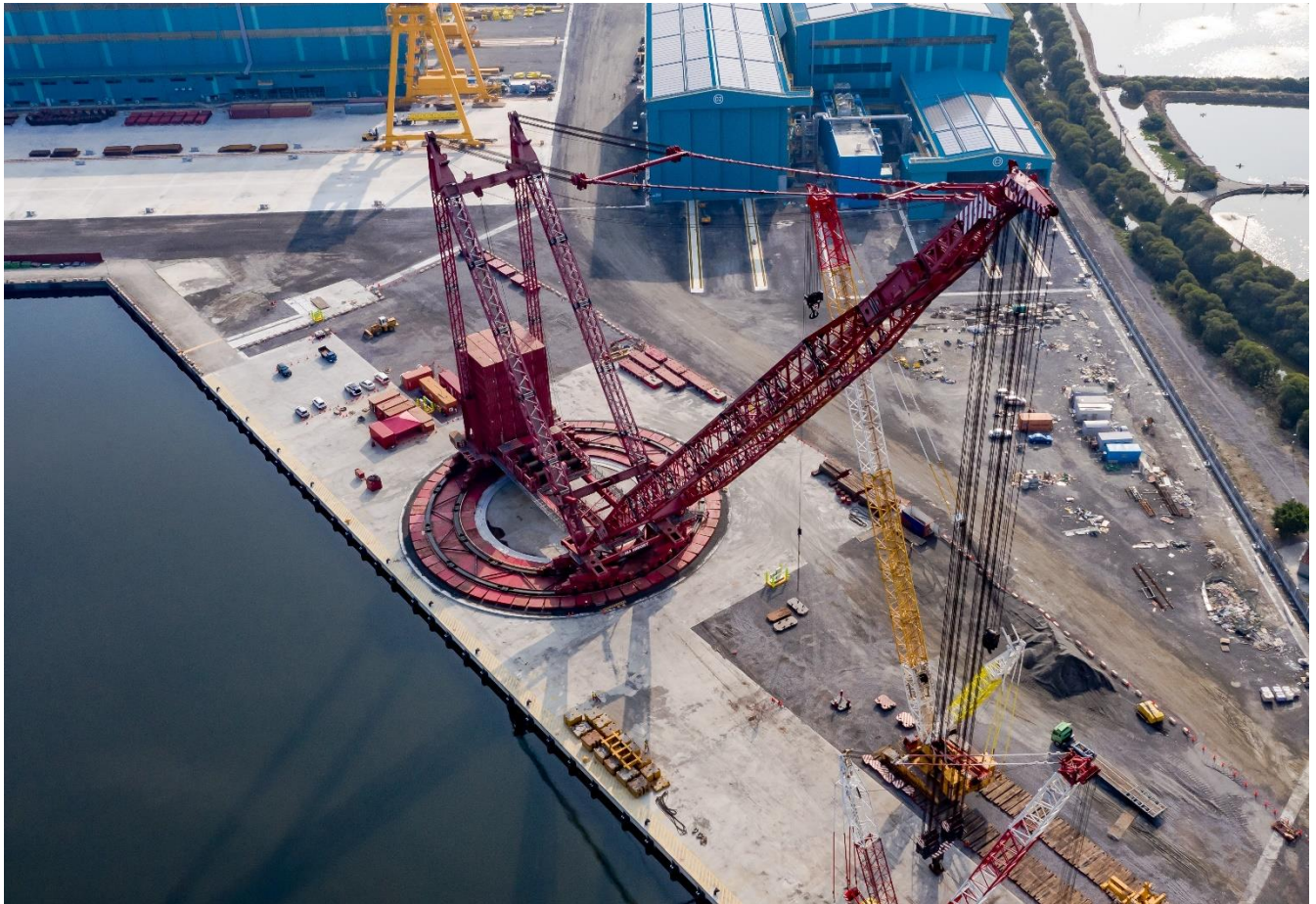


PTC200-DS Ring Crane during final assembly stage at Sing Da Port.

Reference

Subject

Page 3/3



PTC200-DS crane ready for assembling and lifting of wind turbine jackets onto barge.